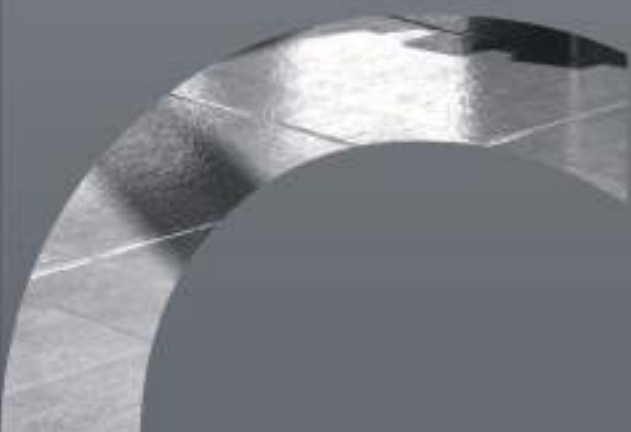




Ermetal

Experience
starts from the line.

Product Catalogue





Experience
starts from the line...





Ermetal

Experience
starts from the line.

ERMETAL, founded in 1978, is a global company engaged in manufacturing functional furniture for dental laboratories and practices.

Since its establishment, it has provided services to 45 countries in 5 continents and has consolidated a solid position in the international arena.

As the leading manufacturer for dental practices and laboratories, ERMETAL gives dentists and dental technicians the best service possible by falling back on its 7000 m² big production facility, competency and expertise of 50 staff members, and in the constant search for new technologies.

ERMETAL is able to observe projects directly on-site, benefits not only from its highly-experienced designers and state of the art production technologies when manufacturing homogenous products, but also when going beyond this and focus on need-based and tailor-made products.

Strengthen its production capacity by investing in human potential and new technologies, widen its product portfolio through research and development.

Always there, when you need a reliable product.
Because **experience starts from the line...**

Süleyman KARA
CEO

C O N T



E N T

04 **M SERIES**
Laboratory Workbenches

28 **E SERIES**
Complementary Modules

32 **LAB. 21**
Laboratory Cabinets

44 **SPARE PARTS & ACCESSORY**



Ermetal Workbenches are designed and created to offer supreme quality, functionality, and durability to guarantee capital performance in today's lab environments.

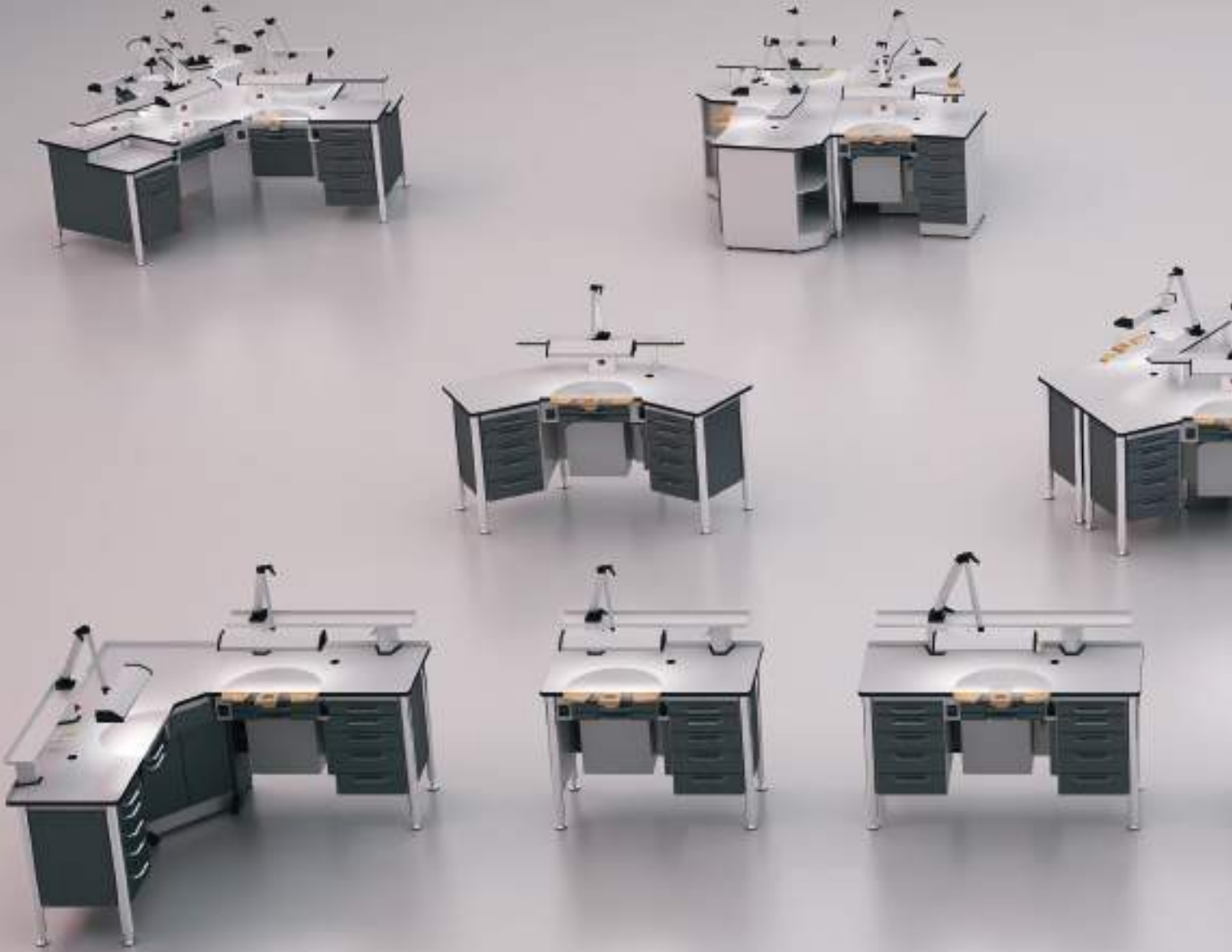
Technical workstations and workbenches are the heart of any busy and efficient dental lab. Daily demands ranging from productivity to employee ergonomics, mean that you have to choose the products that support your systematic work which will last for years.

Our workbench systems offer a huge choice of heights and widths and functional accessories in either single-sided or double-sided or even specially designed configurations. This is the most modular, flexible, re-configurable technician workbench series available today.

Technician Workbenches



Inspire your
imagination



Standart Features

HPL-Compact & Wooden Worktops

Chrom Legs

Fix LED Lighting System

8-Level Analog Speed Switch

800 W Suction Engine

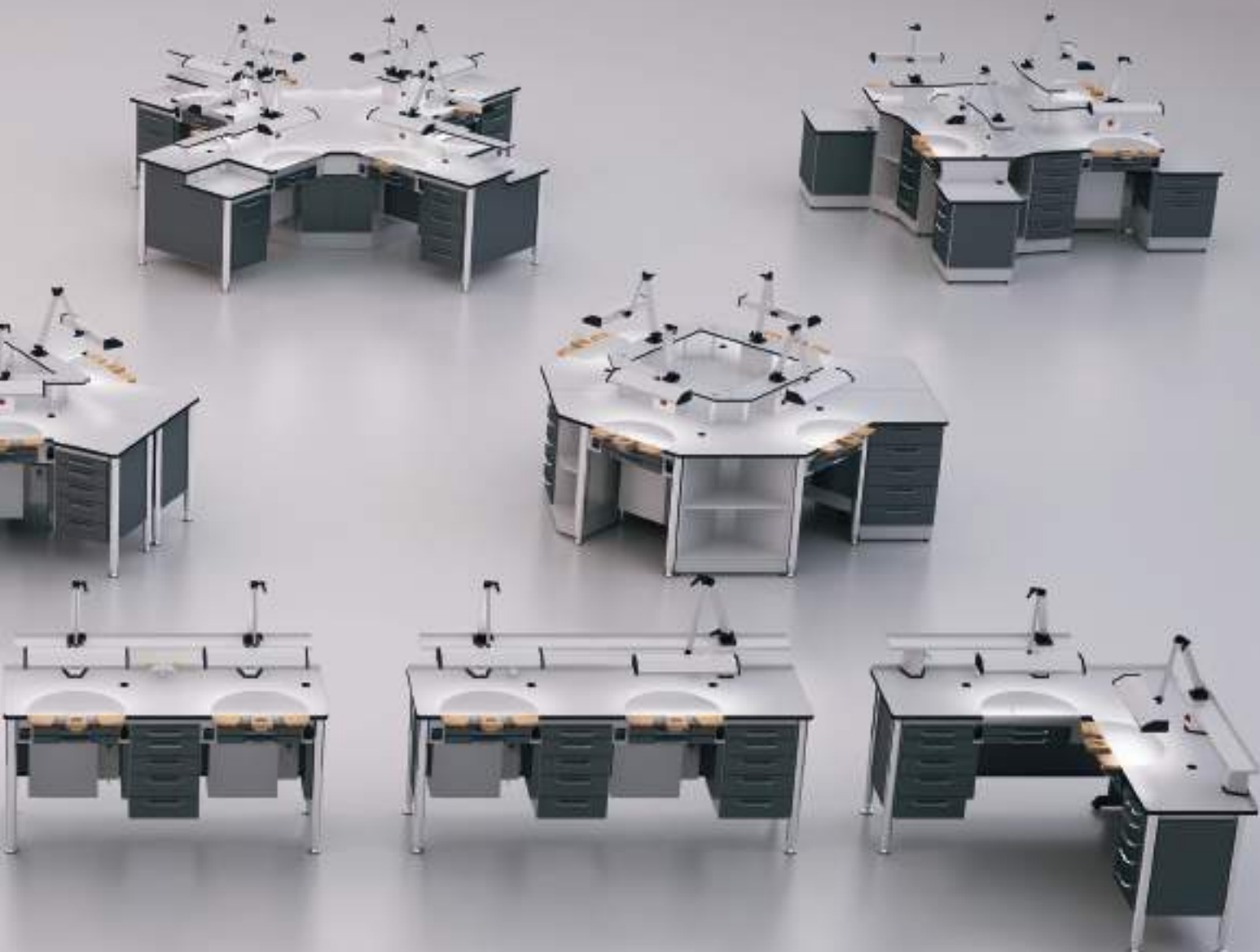
Telescopic Drawer Slides

Gas & Air Supply

Plastic Suction Peg

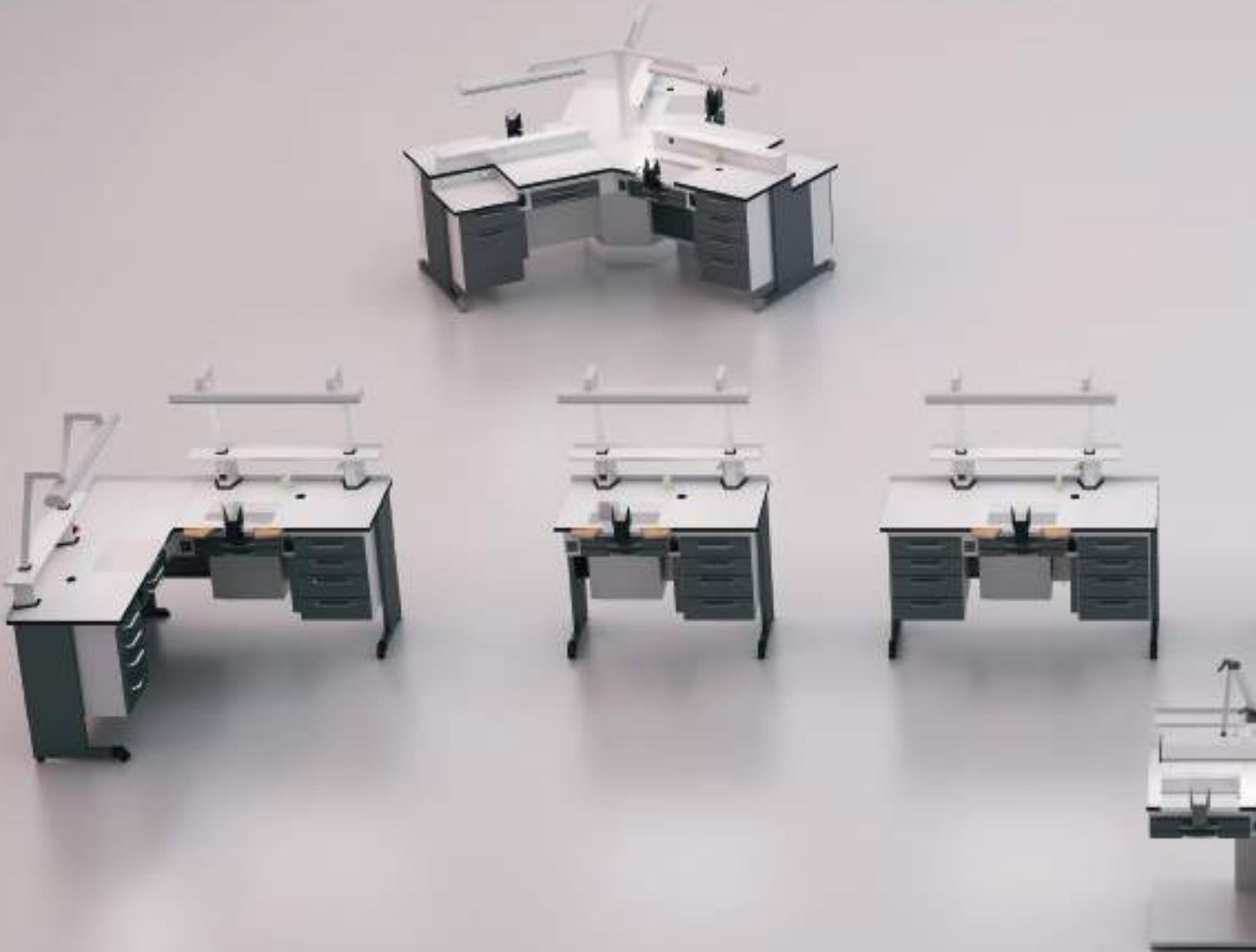
Wooden Arm Rests

Round INOX Work Plate



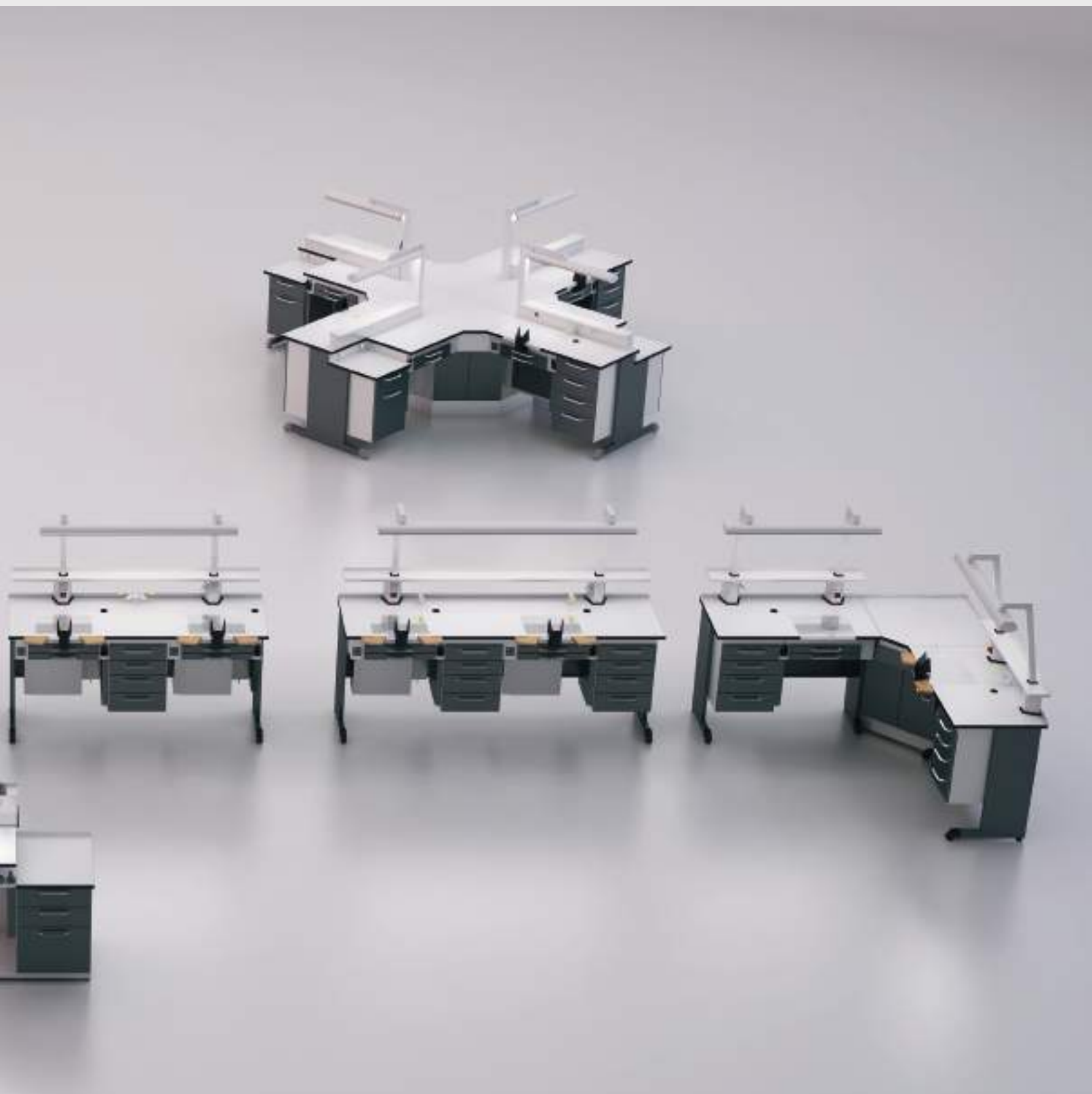
Optional Features

- Laminate Worktop
- Articulated, Flexible Lighting System
- 8-Level Digital Speed Switch
- Soft-Closing Drawer Slides
- Wooden Suction Peg



Standart Features

HPL-Compact Worktop
Fix LED Lighting System
8-Level Analog Speed Switch
800 W Suction Engine
Basic Drawer Slides
Gas & Air Supply
Plastic Suction Peg
Wooden Arm Rests
Square INOX Workplate



Optional Features

Laminate Worktop

Articulated, Flexible Lighting System

Telescopic & Soft-Closing Drawer Slides

Wooden Suction Peg

Round INOX Workplate



M - 80

Technical Details:

Doctor's Single Workbench
22 mm HPL - Compact Worktop
Articulated, Flexible Lighting System, 2750 lm
800 W Suction System
Gas & Air Supply
2- Drawer Storage System
2- Drawer System for Waste & Dust
Complementary Cabinet for Ceramic Furnace
Dimensions: 60 x 111,5 x 86 cm (h)

Discreet design,
powerful identity.





Technical Details:

Single Technician Workbench
22 mm HPL - Compact Worktop
Fix LED - Lighting System, 4000 lm
800 W Suction System
Gas & Air Supply
4- Drawer Storage System
2- Drawer System for Waste & Dust
Dimensions: 60 x 111,5 x 86 cm (h)

M - 82

M - 82 (CL)

Technical Details:

Single Technician Workbench
Chrome Legs Model
22 mm HPL - Compact Worktop
Articulated, Flexible Lighting System, 2750 lm
800 W Suction System
Gas & Air Supply
5- Drawer Storage System
2- Drawer System for Waste & Dust
Dimensions: 60 x 118 x 90 cm (h)





Technical Details:

Single Technician Workbench
22 mm HPL - Compact Worktop
Fix LED - Lighting System, 5200 lm
800 W Suction System
Gas & Air Supply
8- Drawer Storage System
2- Drawer System for Waste & Dust
Dimensions: 60 x 150 x 86 cm (h)

M - 82 / A

M - 82 / A (CL)

Technical Details:

Single Technician Workbench
Chrome Legs Model
22 mm HPL - Compact Worktop
Articulated, Flexible Lighting System, 2750 lm
800 W Suction System
Gas & Air Supply
10- Drawer Storage System
2- Drawer System for Waste & Dust
Dimensions: 60 x 158 x 90 cm (h)





Technical Details:

Single Technician Corner Workbench with Storage Module

- 22 mm HPL - Compact Worktop
- 2 x Fix LED-Lighting System, 4000 lm
- 800 W Suction System
- Gas & Air Supply
- 8- Drawer Storage System
- 2- Drawer System for Waste & Dust
- Storage Corner Module
- Dimensions: 60 x (187 x 187) x 86 cm (h)

M - 82 / C

M - 82 / C (CL)

Technical Details:

Single Technician Corner Workbench with Storage Module

- Chrome Legs Model
- 22 mm HPL - Compact Worktop
- 2 x Articulated, Flexible Lighting System, 2750 lm
- 800 W Suction System
- Gas & Air Supply
- 10- Drawer Storage System
- 4- Drawer System for Waste & Dust
- Storage Corner Module
- Dimensions: 60 x (190 x 190) x 90 cm (h)





Technical Details:

Single Technician Corner Workbench
22 mm HPL- Compact Worktop
2 x Fix LED -Lighting System, 4000 lm
800 W Suction System
Gas & Air Supply
8- Drawer Storage System
2- Drawer System for Waste & Dust
Dimensions: 60 x (171 x 171) x 86 cm (h)

M - 82 / L

M - 82 / L (CL)

Technical Details:

Single Technician Corner Workbench
Chrome Legs Model
22 mm HPL - Compact Worktop
2 x Articulated, Flexible Lighting System, 2750 lm
800 W Suction System
Gas & Air Supply
10- Drawer Storage System
2- Drawer System for Waste & Dust
Dimensions: 60 x (174 x 174) x 90 cm (h)





Technical Details:

Head Technician Workbench

Chrome Legs Model

22 mm HPL - Compact Worktop

Articulated, Flexible Lighting System, 2750 lm

800 W Suction System

Gas & Air Supply

10- Drawer Storage System

2- Drawer System for Waste & Dust

Dimensions: 89 x 210 x 90 cm (h)

M - 83





Technical Details:

Double Technician Workbench
22 mm HPL- Compact Worktop
Fix LED - Lighting System, 6200 lm
2 x 800 W Suction System
Gas & Air Supply
4- Drawer Storage System
4- Drawer System for Waste & Dust
Dimensions: 60 x 175 x 86 cm (h)

M - 93

M - 93 (CL)

Technical Details:

Double Technician Workbench
Chrome Legs Model
22 mm HPL - Compact Worktop
2 x Articulated, Flexible Lighting System, 2750 lm
2 x 800 W Suction System
Gas & Air Supply
5- Drawer Storage System
4- Drawer System for Waste & Dust
Dimensions: 60 x 183 x 90 cm (h)





Technical Details:

Double Technician Workbench
 22 mm HPL- Compact Worktop
 Fix LED - Lighting System, 7800 lm
 2 x 800 W Suction System
 Gas & Air Supply
 8- Drawer Storage System
 4- Drawer System for Waste & Dust
 Dimensions: 60 x 215 x 86 cm (h)

M - 96

M - 96 (CL)

Technical Details:

Double Technician Workbench
 Chrome Legs Model
 22 mm HPL - Compact Worktop
 2 x Articulated, Flexible Lighting System, 2750 lm
 2 x 800 W Suction System
 Gas & Air Supply
 10- Drawer Storage System
 4- Drawer System for Waste & Dust
 Dimensions: 60 x 222 x 90 cm (h)



M - 85

Technical Details:

Single Technician Workbench

22 mm HPL - Compact Worktop

Fix LED - Lighting System, 4800 lm

800 W Suction System

Gas & Air Supply

9- Drawer Storage System

2- Drawer System for Waste & Dust

Dimensions: 60 x 138 x 90 cm (h)



Optional Features

Articulated, Flexible Lighting System, 2750 lm

0,80 kW Brushless Suction Engine





M - 98

Technical Details:

Double Technician Workbench
22 mm HPL - Compact Worktop
Fix LED-Lighting System, 7600 lm
2 x 800 W Suction System
Gas & Air Supply
8- Drawer Storage System
4- Drawer System for Waste & Dust
Dimensions: 60 x 232 x 90 cm (h)

Optional Features

2 x Articulated, Flexible Lighting System, 2750 lm
2 x 0,80 kW Brushless Suction Engine





Technical Details:

Technician Group Workbench for Three Technicians

- 22 mm HPL - Compact Worktop
- 3 x Fix LED - Lighting System, 4000 lm
- 3 x 800 W Suction System
- Gas & Air Supply
- 3 x Complementary Cabinet for Ceramic Furnace
- Dimensions: 245 x 285 x 86 cm (h)
- 13m² Working Space

M - 100

M - 100 (CL)

Technical Details:

Technician Group Workbench for Three Technicians

- Chrome Legs Model
- 22 mm HPL - Compact Worktop
- 6 x Articulated, Flexible Lighting System, 2750 lm
- 3 x 800 W Suction System
- Gas & Air Supply
- 3 x Complementary Cabinet for Ceramic Furnace
- Dimensions: 250 x 290 x 90 cm (h)
- 14 m² Working Space





Technical Details:

Technician Group Workbench for Three Technicians

Chrome Legs Model

22 mm HPL - Compact Worktop

3 x Articulated, Flexible Lighting System, 2750 lm

3 x 800 W Suction System

Gas & Air Supply

Dimensions: 237 x 275 x 90 cm (h)

14 m² Working Space

M - 150

M - 200

Technical Details:

Technician Group Workbench for Four Technicians

Chrome Legs Model

22 mm HPL - Compact Worktop

4 x Articulated, Flexible Lighting System, 2750 lm

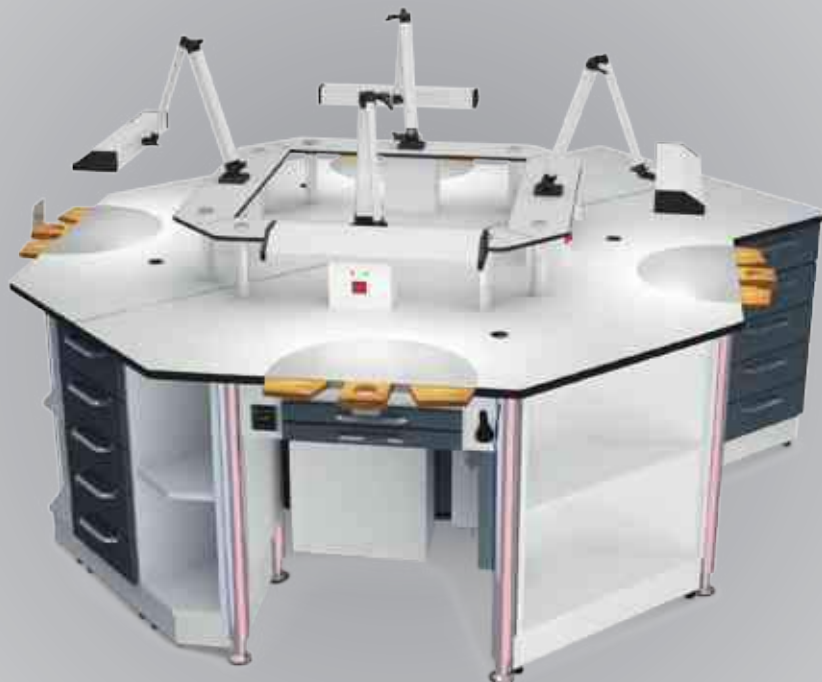
4 x 800 W Suction System

Gas & Air Supply

Convenient Shelf System

Dimensions: 230 x 240 x 90 cm (h)

10 m² Working Space





Technical Details:

Technician Group Workbench for Four Technicians

Chrome Legs Model

22 mm HPL - Compact Worktop

4 x Articulated, Flexible Lighting System, 2750 lm

4 x 800 W Suction System

Gas & Air Supply

Convenient Shelf System

Dimensions: 245 x 245 x 90 cm (h)

16 m² Working Space

M - 260

M - 280

Technical Details:

Technician Group Workbench for Four Technicians

Chrome Legs Model

22 mm HPL - Compact Worktop

4 x Articulated, Flexible Lighting System, 2750 lm

4 x 800 W Suction System

Gas & Air Supply

4 x Complementary Cabinet for Ceramic Furnace

Dimensions: 305 x 305 x 90 cm (h)

16 m² Working Space





Technical Details:

Technician Group Workbench for Four Technicians

22 mm HPL - Compact Worktop

4 x Fix LED - Lighting System, 4000 lm

4 x 800 W Suction System

Gas & Air Supply

4 x Complementary Cabinet for Ceramic Furnace

Dimensions: 348 x 348 x 90 cm (h)

20 m² Working Space

M - SAM

M - SAM (CL)

Technical Details:

Technician Group Workbench for Four Technicians

Chrome Legs Model

22 mm HPL - Compact Worktop

8 x Articulated, Flexible Lighting System, 2750 lm

4 x 800 W Suction System

Gas & Air Supply

4 x Complementary Cabinet for Ceramic Furnace

Dimensions: 355 x 355 x 90 cm (h)

22 m² Working Space



S-BOX



Technical Details:

Single Technician Workbench with Safety Hood
22 mm HPL - Compact Worktop
8 mm strong, closed, Plexy Glass Safety Hood
Etange Luminaire with 2 x 18 W Fluorescent Tubes
0,80 kW Brushless Suction Engine
Two-Ways Suction Channel
0,10 Micron Filter Sleeve
25 L Capacity for Dust Reservoir
Foot Pedal Control
Gas & Air Supply
Single Drawer System for Waste & Dust
Dimensions: 64 x 86 x 126 cm (h)

The S-Box has been specifically designed for roughing-out plaster and porcelain. Our main goal is to guarantee a clean and sturdy workplace while making sure that all particles are caught and sealed and can't affect the health of technicians in a negative way.

Dust and even smaller particles are filtered through a special filtering cloth and finally collected in a special container to prevent any danger of inhaling resins, gypsum and polluting metal dust produced while working. Ergonomic controls allow the technician to be efficient and fast with a minimal amount of movement. Technical gimmicks such as the changeable viewing panel, which can be replaced when worn-out is only one example of the unique concept behind this unit.



Lighting Systems



Articulated, Flexible Lighting System



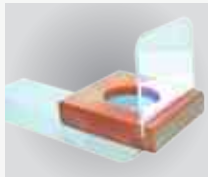
Fix LED Lighting System

Gas Supply



Gas Tap

Working Area



Wooden Peg



Plastic Peg



Arm Rests



Round Workplate



Square Workplate

Speed Controllers



Analog Speed Control



Digital Speed Control



16 A Residual Current Fuse

Vacuum Systems



Teflon Filter

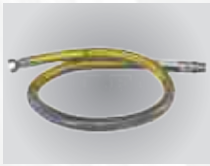


Dust Bag



Vacuum Engine





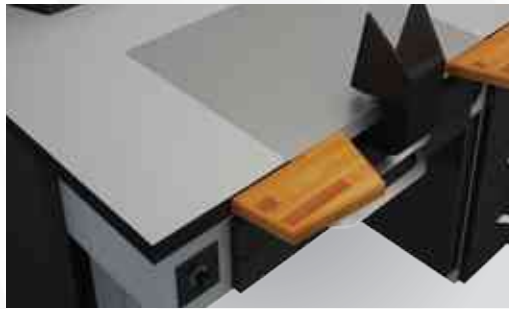
Gas Connection Hose



Worktops



Laminate Worktop



HPL-Compact Worktop



Wooden Worktop

Drawer Slides



Basic Drawer Slides

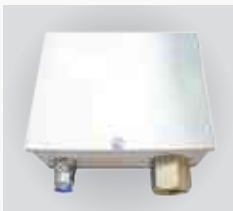


Soft-Closing Drawer Slides



Telescopic Drawer Slides

Air Supply



8 mm Pneumatic Air Thread

1/2 inch Gas Thread



Retractable Air Mechanism



Air Gun







E - 35

Technical Details:

22 mm HPL- Compact Worktop

Double - Door + 2- Shelf Complementary Module

Dimensions: 60 x 60 x 86 cm (h)

E - 36

Technical Details:

22 mm HPL- Compact Worktop

Single Door + 2- Shelf Complementary Module

Dimensions: 60 x 50 x 86 cm (h)





Technical Details:
22 mm HPL- Compact Worktop
Single Drawer, 13 cm (h)
Single Door + Shelf Complementary Module
Dimensions: 60 x 50 x 86 cm (h)

E - 37



Technical Details:
22 mm HPL- Compact Worktop
2- Drawer, each 13 cm (h)
Single Door Complementary Module
Dimensions: 60 x 50 x 86 cm (h)

E - 38

E - 39

Technical Details:
22 mm HPL - Compact Worktop
4- Drawer, each 17 cm (h) Complementary Module
Dimensions: 60 x 50 x 86 cm (h)



E - 40

Technical Details:
22 mm HPL - Compact Worktop
5- Drawer, each 13 cm (h) Complementary Module
Dimensions: 60 x 50 x 86 cm (h)





Technical Details:
22 mm HPL - Compact Worktop
Single Door + 2- Shelf Complementary Module
Dimensions: 60 x 50 x 76 cm (h)

E - 41



Technical Details:
22 mm HPL - Compact Worktop
2- Drawer, each 13 cm (h)
Single Door Complementary Module
Dimensions: 60 x 50 x 76 cm (h)

E - 42

E - 43

Technical Details:
22 mm HPL - Compact Worktop
4- Drawer, each 15 cm (h) Complementary Module
Dimensions: 60 x 50 x 76 cm (h)





Technical Details:
22 mm HPL - Compact Worktop
Single Door + Shelf Complementary Module for Corner
Dimensions: 75 x 75 x 86cm (h)

E - 49

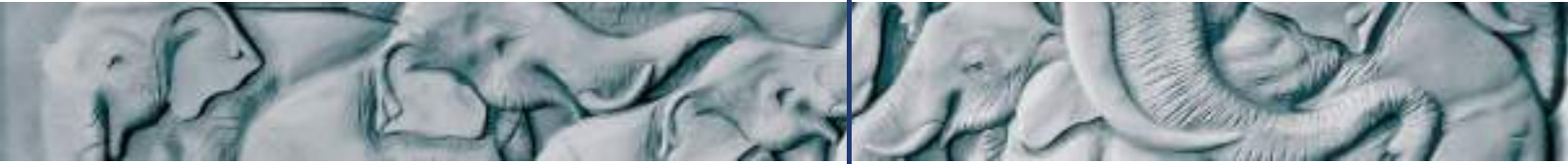
E - 50

Technical Details:
22 mm HPL - Compact Worktop
Double - door + 2- Shelf Complementary Module for Corner
Dimensions: 75 x 75 x 86 cm (h)

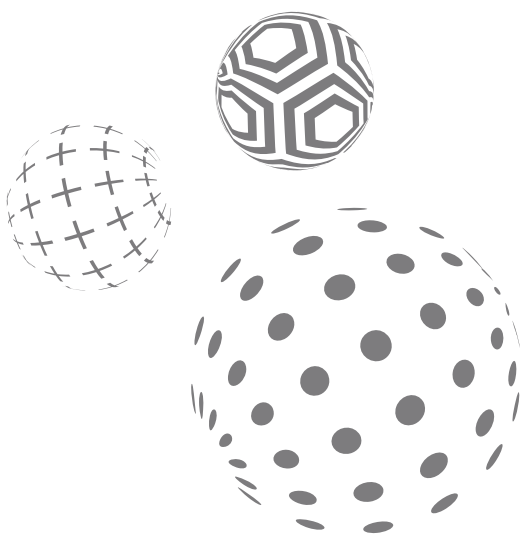


The foundation of an ideal laboratory environment is based on the planning stage. Unfortunately, plaster rooms are often neglected, but the Ermetal difference lies here! Benefit from our years of experience and the variety of solutions for your plaster room – you will immediately feel the difference.





LAB. 21



Flawless
Production



LAB. 21 - A

Technical Details:

INOX Worktop

Square Legs with a height of 15 cm

Single Door + 2- Shelf Laboratory Module

Dimensions: 60 x 50 x 90 cm (h)



Flawless
Production



Technical Details:
INOX Worktop
Square Legs with a height of 15 cm
Single Drawer, 13 cm (h)
Single Door + Shelf Laboratory Module
Dimensions: 60 x 50 x 90 cm (h)

LAB. 21 - B



Technical Details:
INOX Worktop
Square Legs with a height of 15 cm
3- Drawer, each 23,5 cm (h) Laboratory Module
Suitable for Plaster Storage
Dimensions: 60 x 50 x 90 cm (h)

LAB. 21 - C

LAB. 21 - D4

Technical Details:
INOX Worktop
Square Legs with a height of 15 cm
4- Drawer, each 18cm (h) Laboratory Module
Dimensions: 60 x 50 x 90 cm (h)

LAB. 21 - D5

Technical Details:
INOX Worktop
Square Legs with a height of 15 cm
5-Drawer, each 14 cm (h) Laboratory Module
Dimensions: 60 x 50 x 90 cm (h)





Technical Details:
INOX Worktop
35 x 40 x 18cm (h) Dimensions for INOX Sink
Air Gun Nozzle
Square Legs with a height of 15 cm
Double - door Laboratory Module
Dimensions: 60 x 100 x 90 cm (h)

LAB. 21 - E 1



Technical Details:
INOX Worktop
35 x 70 x 18cm (h) Dimensions for INOX Sink
INOX Sink Grid
Plastic or INOX Plaster Trap
Air Gun Nozzle
Square Legs with a height of 15 cm
Double - door Laboratory Module
Dimensions: 60 x 100 x 90 cm (h)

LAB. 21 - E 2





Technical Details:

INOX Worktop
Integrated INOX Hood
35 x 70 x 18 cm (h) Dimensions for INOX Sink
INOX Sink Grid
Plastic or INOX Plaster Trap
Air Gun Nozzle
Square Legs with a height of 15 cm
Double - door Laboratory Module
Dimensions: 60 x 100 x 90 cm (h)

LAB. 21 - E 3

LAB. 21 - J

Technical Details:

Completely made of INOX
Heavy - Duty Castor Wheels, fully lockable
3 Compartments for Plaster
65 L Capacity
Dimensions: 34 x 48 x 58 cm (h)





Technical Details:
INOX Worktop
Integrated Waste Chute with Spatula Scraper
40 L Waste Bin in Cabinet
Square Legs with a height of 15 cm
Single Door + Shelf Laboratory Module
Dimensions: 60 x 50 x 90 cm (h)

LAB. 21 - G



Technical Details:
INOX Worktop
Integrated Waste Chute with Spatula Scraper
40 L Waste Bin in Cabinet
Square Legs with a height of 15 cm
Tilt-Out Drawer Suitable for Plaster Storage
Single Drawer, 15 cm (h)
Single Door + Shelf Laboratory Module
Dimensions: 60 x 100 x 90 cm (h)

LAB. 21 - GA

LAB. 21 - GB

Technical Details:
INOX Worktop
Integrated Waste Chute with Spatula Scraper
40 L Waste Bin in Cabinet
Square Legs with a height of 15 cm
2- Drawer, each 30 cm (h)
Suitable for Plaster Storage
Single Door + Shelf Laboratory Module
Dimensions: 60 x 100 x 90 cm (h)

LAB. 21 - GC

Technical Details:
INOX Worktop
Integrated Waste Chute with Spatula Scraper
40 L Waste Bin in Cabinet
Square Legs with a height of 15 cm
3- Drawer, each 23,5 cm (h)
Suitable for Plaster Storage
Single Door + Shelf Laboratory Module
Dimensions: 60 x 100 x 90 cm (h)





Technical Details:
INOX Worktop
Square Legs with a height of 15 cm
Single Door + 2- Shelf Laboratory Module
60 x 100 x 90 cm (h)

LAB. 21 - KA



Technical Details:
INOX Worktop
Square Legs with a height of 15 cm
Single Door + 2- Shelf Laboratory Module
Dimensions: 60 x 100 x 90 cm (h)

LAB. 21 - AK

LAB. 21 - H

Technical Details:
Completely made of INOX
Heavy-Duty Castor Wheels, fully lockable
INOX Handle
85 L Capacity
Dimensions: 40 x 45 x 65 cm (h)





Technical Details:

22 mm HPL - Compact Worktop
4- Shelf Shelving Unit for packaging
Square Legs with a height of 15 cm
Single Door and 5- Drawer Module System
Dimensions: 60 x 100 x 205 cm (h)

LAB. 21 - W 100

LAB. 21 - W 150

Technical Details:

22 mm HPL - Compact Worktop
4- Shelf Shelving Unit for packaging
Square Legs with a height of 15 cm
Double Door and 5- Drawer Module System
Dimensions: 60 x 150 x 205 cm (h)





Technical Details:
Single Wall Cabinet
Single Door and 2- Shelf
Dimensions: 30 x 50 x 60 cm (h)

LAB. 21 - AS-1



Technical Details:
Double Wall Cabinet
Double - door and 2- Shelf Shelving Unit
Dimensions: 30 x 100 x 60 cm (h)

LAB. 21 - AS-2

LAB. 21 - AS-3

Technical Details:
Wall - Mounted, 2- Shelf Shelving Unit
Dimensions: 30 x 100 x 60 cm (h)



LAB. 21 - AS-4

Technical Details:
Wall-Mounted, 2- Shelf Shelving Unit with Sliding Glass Doors
Dimensions: 30 x 100 x 60 cm (h)



Lab Systems

LAB. 21

S E R I E S







ER - L001



ER - L002

ER-L010/A = 13 x 33,5 cm
ER-L010/B = 13,5 x 18,5 cm
ER-L010/S = 12,5 x 16,5 cm
ER-L010/M = 14,5 x 17,5 cm
ER-L010/L = 17,5 x 18,5 cm
ER-L010/XL = 17,5 x 24,5 cm



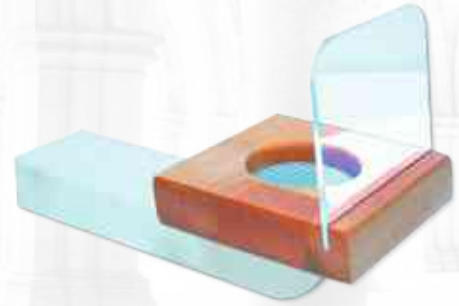
ER - L010



ER - L011



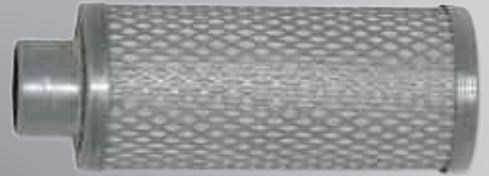
ER - L018



ER - L021



ER - L012



ER - L014



ER - L025



ER - L024



ER - L030



ER - L029



ER - L035



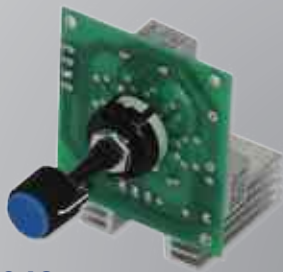
ER - L036



ER - L065



ER - L061



ER - L042



ER - L044



ER - L041



ER - L040



ER - L072



ER - L071



ER - L070



ER - L069



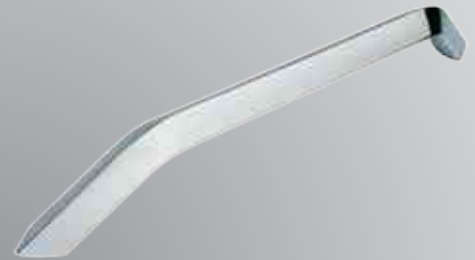
ER - L083



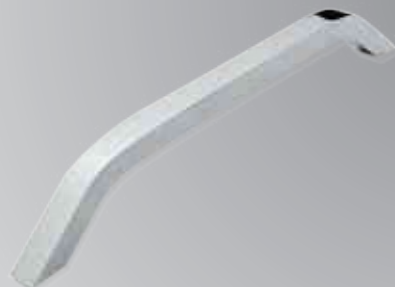
ER - L083



ER - L064 / 1



ER - L064 / 2



ER - L064 / 3



ER - L064 / 4



ER - L075



ER - L074



ER - L073



ER - L080



ER - L087



ER - L086



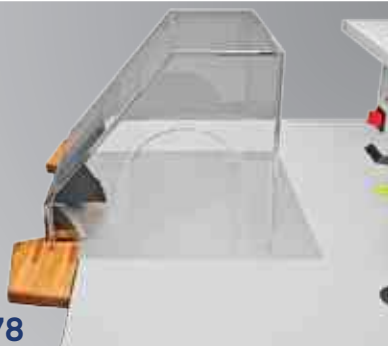
ER - L089



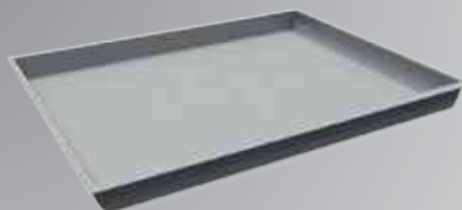
ER - L051



ER - L053



ER - L078



ER - L063



A l m o s t

a l l p r o d u c t s

can be **completely customized.**

The possibilities are endless.

From Inspiration to Realisation

We bring together inspiration and know-how. Art and life...

Each ERMETAL collection has its own unique personality.

Creativity, customization and responsibility: the unique values that define ERMETAL and our collections.

Our collections combine original designs, high-quality materials and unique know-how.

Our design process is a trinity between technology, materials science and intelligent form.



Büğdüz Mah. Çankırı Bul. No: 119
06750 Akyurt ANKARA - TÜRKİYE
T : +90 312 348 64 08 (pbx)
F : +90 312 348 94 64

ermetaldental.com.tr
info@ermetaldental.com.tr